

V6 is Compatible with R16 (AutoCAD 2004) AND Compatible with R14 – R15 (2000, 2000i, 2002)

New – Extensive Object Data Support (works with AutoCAD Map 3 → Map 2004)

- **Adjust** - Create Rubbersheeting Calibration from GPS Data. Adjust V6 can automatically create calibration data using Attribute Blocks and Points with Object Data.
- **Linework Object Data Annotation** – This new function is incredibly useful for creating Text labels from the contents of Object Data fields. It offers so many setup options you can create practically any style of labeling you can think of, directly from Object Data attached to Line and Polylines. (see inside)
- **PET** – With V6 you can perform Search and Replace operations using Object Data. Quickly and automatically transfer information stored as properties such layer names, colors, etc into Object Data fields. Select map elements based on Object Data and automatically change properties.
(see our website WWW.TCICORP.COM for an example that uses this new capability to prepare maps for use with **NPDES** and **GASB 34** reports)
- **PolyTools** – ALL PolyTools now Support and Maintain Object Data
Poly **Make** creates Polylines from Lines and Arcs and maintains the Object Data
Poly **Join** and **Connect** creates new Polylines that include all Object Data connected to the originals
Poly **Break** creates two new Polylines and connects all original Object Data to both
Poly **Reverse** reverses the Direction of Polylines and Maintains all Object Data
Makelines creates Lines from 2 point Polylines and reconnects all Object Data to the new Line and many more. Now you can edit and manipulate linework without losing the Object Data.
- **ODATT** – This new function creates functionally identical Attribute Blocks from Points with Object Data. A new attribute block is created in your drawing that contains one Invisible Attribute for each Field in the chosen Object Data

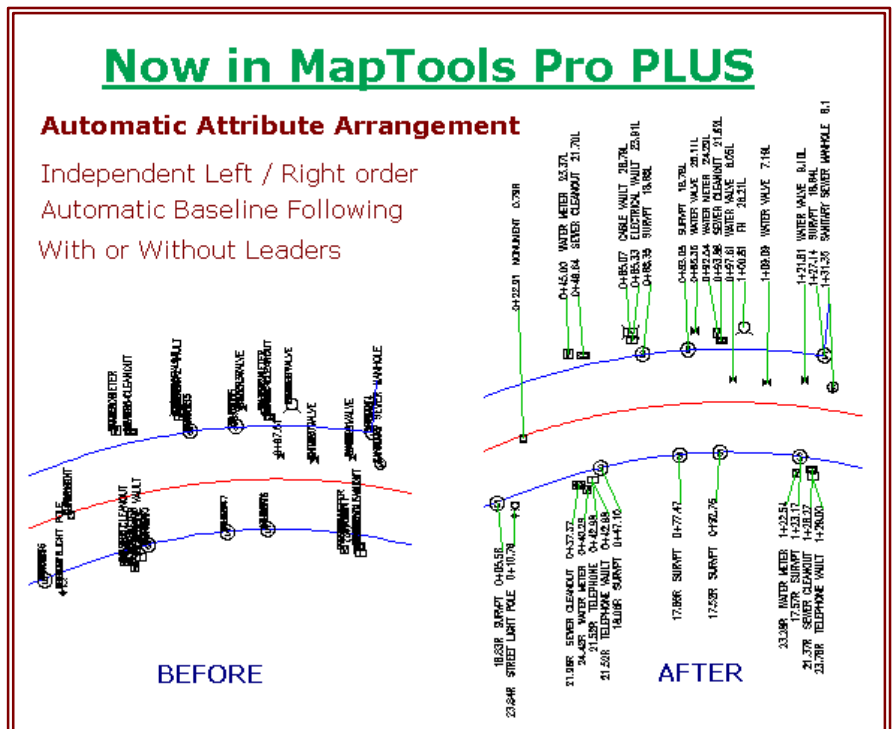
Automated Attribute Arrangement

Corridor Mapping is characterized by dense information along a linear path. Creating legible arrangements of textual information within a limited space is a very difficult. With V6, the CoriMap Sampler is extended to include this powerhouse tool originally developed for our CoriMap™. With this tool you can **automatically position large groups** of visible attributes totally automatically.

This Attribute Arrangement tool creates order from chaos automatically. Some of the formatting options include: Offset, Stacked, Indented and Leadered.

Our new **Auto Arrange** mode includes a **Baseline Follow** option (shown here) which automatically finds a location along a given path (relative to the baseline) where a group of attributes can be displayed without overlapping other attribute groups AND be **as close as possible to the block insertion point**.

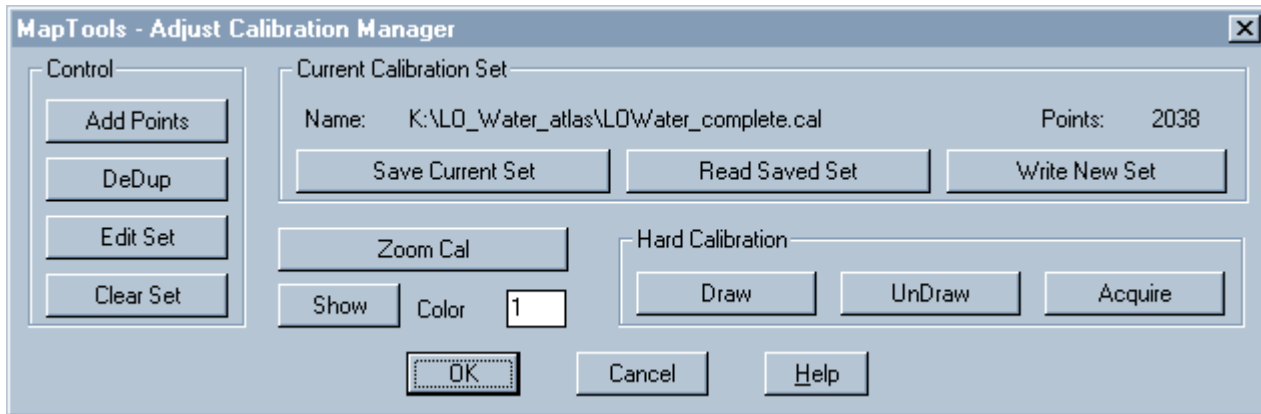
All you do is select the blocks, identify the baseline and choose an offset position.



Adjust V6 – Industrial Strength Rubbersheeting gets an Extensive Overhaul

V6 makes it much easier to work with very large calibration sets.

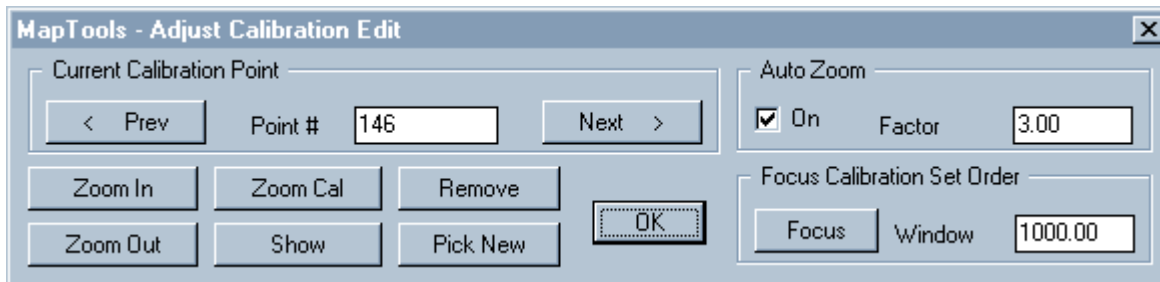
The first, most critical and time consuming operator task of the rubber sheeting process is setting the Calibration Point Set which controls the action of all processing. ADJUST allows unlimited Calibration so we have designed an all new, dialog box driven Calibration Manager to help you Create, Save, Recall and Modify these point sets.



Hard Calibration brings incredible flexibility to the creation and editing of rubbersheeting calibration. Now you can revise your calibration set by manipulating polylines.

DeDup is a new function that can **automatically remove conflicting calibration**. Any calibration pair that has the same From point as another calibration pair is removed. You can also choose to have all Zero Length calibration pairs removed at the same time.

Our new Dialog Box driven interface includes a new **Calibration Set Editor**



- A new **AutoZoom** feature will automatically center the current calibration pair in your view. Now you can simply press the Next and Previous buttons to quickly see and edit each calibration pair.
- A new **Focus** facility has been added to aid in the review and revision of very large calibration sets (some customers have used sets with more than 65,000 calibration pairs). When you focus a calibration set, **you pick a point near the area** you want to focus on and the calibration set order is automatically resorted based on proximity to the focus point.

PET V6 menus include Object Data capability for Search and Replace operations.

A number of special operations are also available for Object Data including:

- Search Character Object Data using **Wildcards**
- Search Numeric Object Data using **Ranging**
- Replace Character Object Data using **Prefixing** and **Suffixing**
- Replace Numeric Data using **Setting, Scaling, Offsetting and Rounding**
- Calculate and Store **Length, Area** and **Start/Insertion Points** in Object Data Fields
- Add or Multiply** the computed Length or Area by amounts you set

ODANNO - Linework Annotation using Object Data

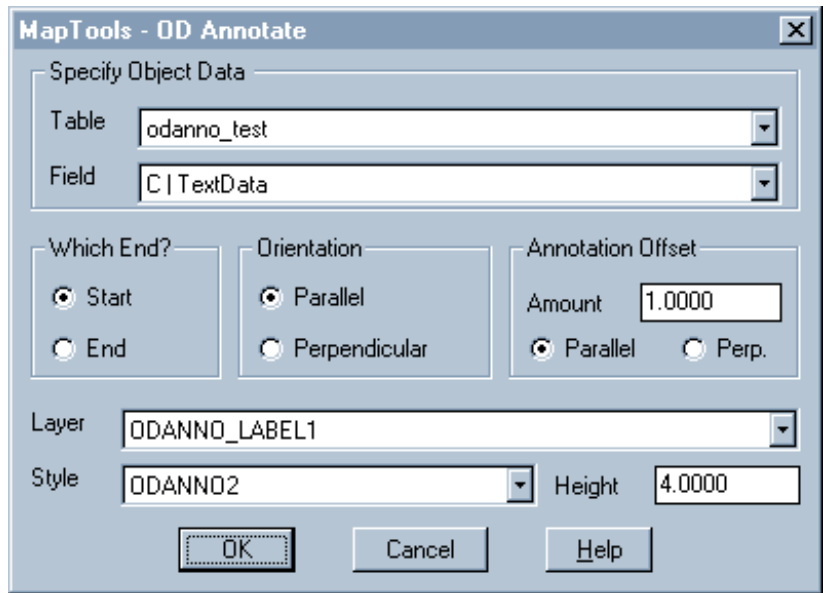
This new function makes quick work of many linework annotation jobs. You can use any Character, Real or Integer data field as the label source.

ODANNO works with Lines and Polylines.

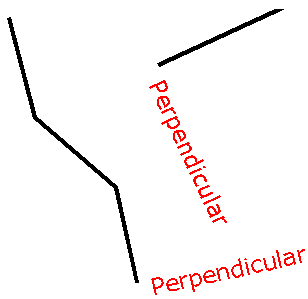
All labels are created as **plain Text** entities using the Layer, Style and Height setting you choose.

Each new Text label is created with an identical **copy of the Object Data** attached to the linework.

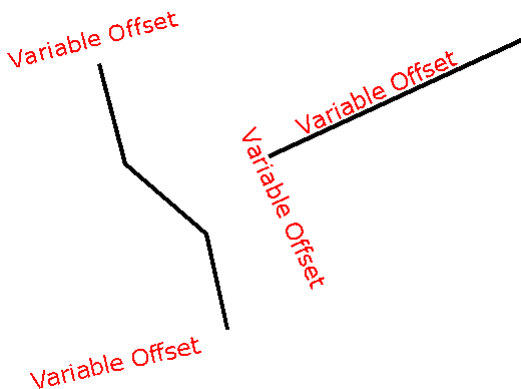
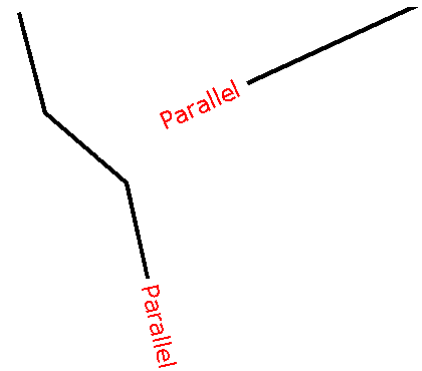
Text can be positioned relative to either end of the linework and the appropriate Text Justification is always used (it will still look right even when you change the text height).



Programmable Label Orientation



ODANNO labels are never upside-down



Labels can be oriented Parallel or Perpendicular to the line (or Polyline segment)

AND

They can be Offset Parallel or Perpendicular

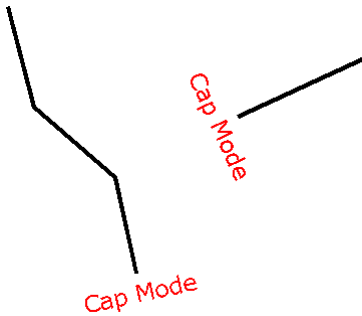
Offsets can be Positive or Negative

Special Annotation Processing

ODANNO has several special modes that make it even more flexible

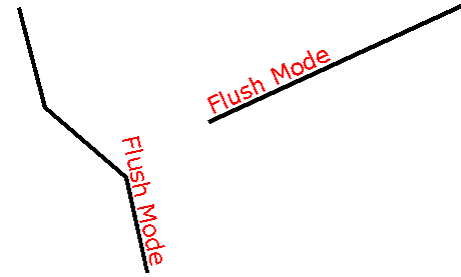
Turn the page to see how they work.

ODANNO Special Processing



Cap Mode:

Perpendicular Orientation
Positive Parallel Offset



Flush Mode:

Parallel Orientation
Negative Parallel Offset

Both very useful!

One Button Feature Labeling with "Assembled Labels"

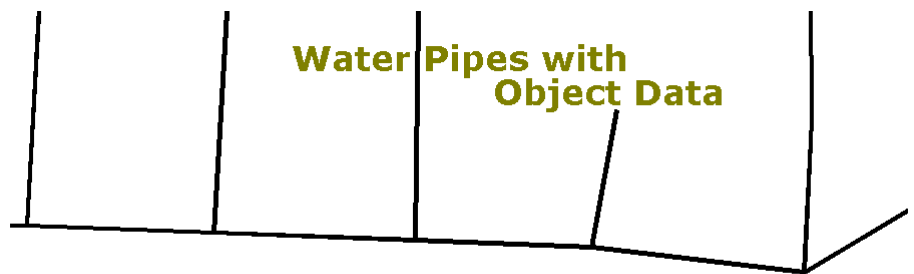
Using the new **PET V6 Object Data Search and Replace** capability, you can automatically assemble Character Object Data fields that are a combination of Freeform Text and data from other Object Data fields.

In this example we use **PET** to assemble a new label in an Object Data field that is made up of:

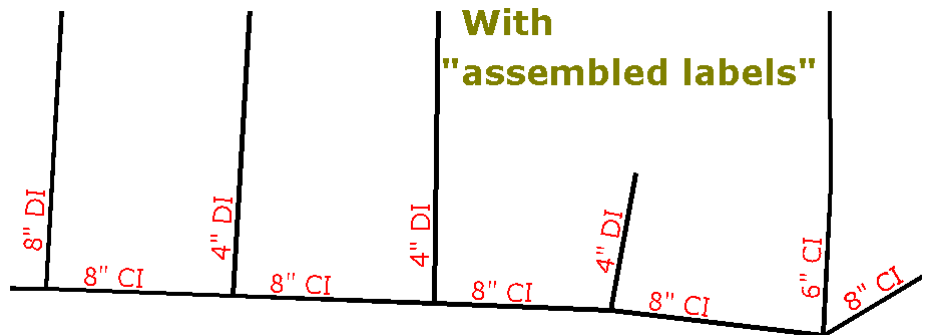
- the Pipe Size from an integer Object Data field
- the " " character
- the Pipe Type from a Character Object Data field

ODANNO is used to automatically label the pipes using the new assembled label.

All of this is done with a single MapTools Commander operation.



Automatic Feature Labeling from Object Data



More New Features in MapTools V6

New Coincident Linework Finder - finds linework that is Coincident with other linework.

Semi-Automated Attribute Positioners - Helps you position Attributes in crowded areas. This tool was designed to assist with the repositioning of Visible Attributes in "crowded" applications. When you pick an Attribute, a Colored Graphic Line is drawn from the Attribute to the Block it is associated with. This helps you position it in relation to the Block. **Three versions** are included; Maintain Rotation, Rotation to angle 0 and Rotation to match Selected Linework.

Rotate Blocks independently of Attributes - allows interactive rotation of Block Graphics without changing the position or orientation of Attributes.

For Upgrade and Purchase information log onto our Website at WWW.TCICORP.COM